

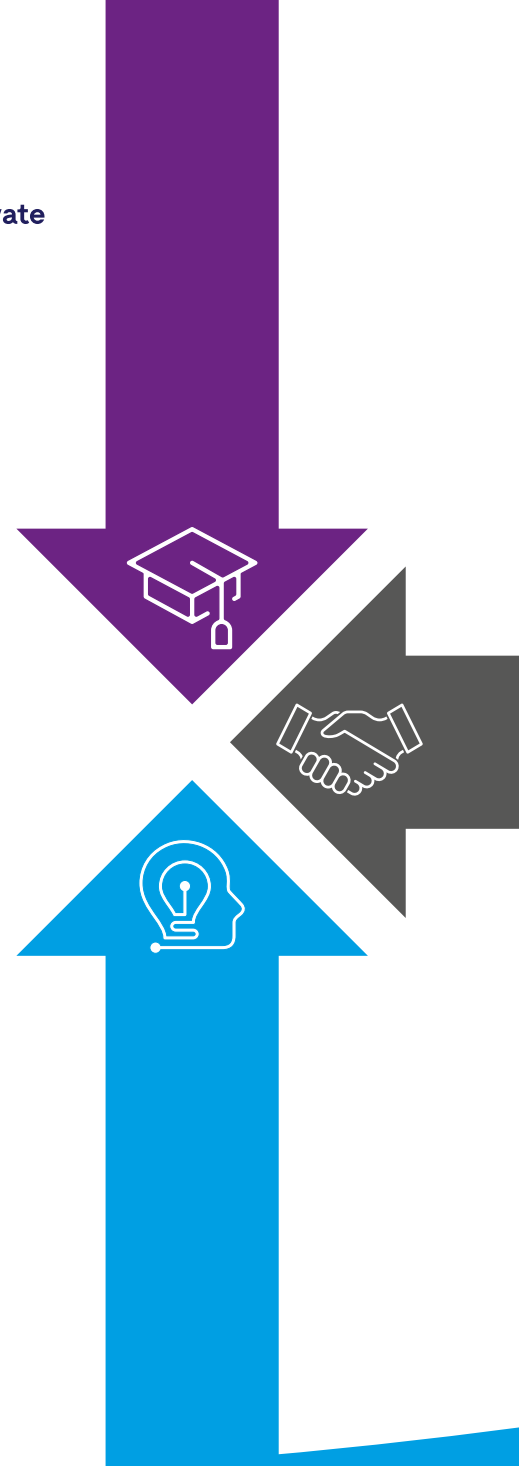
NUCLEAR AMRC
ADVANCED MANUFACTURING RESEARCH CENTRE



Knowledge Transfer Partnerships

Develop new capabilities and improve your business performance through a Knowledge Transfer Partnership with the Nuclear AMRC.

The national Knowledge Transfer Partnership (KTP) programme helps businesses improve their competitiveness and productivity through the better use of knowledge, technology and skills from the UK's research base.



A KTP can help you:

- Find an innovative solution to help your business grow.
- Access qualified people to lead new projects.
- Develop your company for a changing market.
- Improve your performance and operations.
- Become more competitive.
- Increase profitability.

A KTP with the Nuclear AMRC is a three-way partnership between your business, our centre and a graduate. The graduate – known as a KTP Associate – will work on a strategic challenge of your choosing, with the project lasting from 12 months to three years.

Knowledge Transfer Partnerships (KTPs) are funded by UKRI through Innovate UK with the support of co-funders, including the Scottish Funding Council, Welsh Government, Invest Northern Ireland, Defra and BEIS.

How it works

The KTP Associate is part-funded by Innovate UK, and works at your company on a project of your choosing. The Associate is supervised by an experienced member of the Nuclear AMRC staff, bringing the latest skills and management techniques into your organisation.

You will contribute to the salary of the KTP Associate, and the cost of the Supervisor.

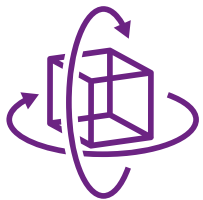
The amount you need to invest depends on the length of the project (12 months to three years) and the size of your company. Typically:

- Small and medium-sized enterprises contribute one third of the project costs, around £35,000 per year.
- Large businesses contribute half the project costs, around £55,000 a year.

These costs are comparable to those of employing a recent graduate, but with the added value of support and time from the Nuclear AMRC and Knowledge Transfer Network.

In more than two thirds of KTPs, the Associate is taken on by the company as an employee at the end of the project.

What kind of project can be funded by a KTP?



KTPs:

- Capability development.
- Manufacturing process optimisation.
- Product development & prototyping.



Management KTPs:

- Business improvement techniques.
- Manufacturing improvement tools.
- Manufacturing strategy development.

Getting started

The Nuclear AMRC will work with you and Innovate UK to shape your project idea, make the application and help you manage the project.

We will manage and submit your application, with support from a regional Knowledge Transfer Adviser. For the application, you must specify your business objectives, proposed tasks for the Associate, and deliverables.

Preparing a good application can take several months, but we will support you at every stage. New calls are issued every few months.

Recruitment of your KTP Associate can start as soon as the grant offer letter is received.

Who's involved

Innovate UK manages the KTP programme and facilitates its delivery through a range of partners including the Knowledge Transfer Network (KTN), Knowledge Bases and Businesses. Each partner plays a specific role in the support and delivery of the programme.

KTP Associate:

- Recruited jointly by the Nuclear AMRC and your company.
- Employed by the Nuclear AMRC, but spends an average four days a week working at your company for the duration of the project.
- Benefits from a personal development budget and additional training in business and project management.

KTP Supervisor:

- A qualified and experienced member of the Nuclear AMRC staff.
- Spends half a day a week, or equivalent, in your company.

Company Supervisor:

- A suitable member of your company.
- Acts as day-to-day manager for the Associate.
- Ensures the new knowledge is embedded in your company.

Knowledge Transfer Adviser:

- Provides support and expertise from initial enquiry to project close.
- Meets regularly with the project team.
- Employed by the Knowledge Transfer Network.

Process



Generate ideas

1



Submit fact-finding form

2



Initial checks
by Innovate UK

3



Submit application

4



Award and
contracting

5



Project begins

6



Recruit KTP Associate

7



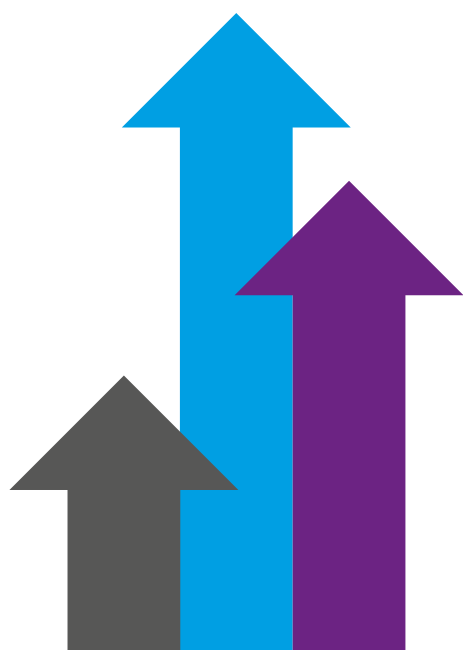
Regular project reviews

8



Project close

9





Our Fit For Nuclear programme has helped hundreds of UK manufacturers develop their businesses and become more competitive.

KTPs are a great way for F4N companies to create a lasting advantage by developing advanced and innovative management and technical capabilities at minimal cost and risk.

A KTP with the Nuclear AMRC could help you develop new capabilities in:

- Strategic business improvement.
- Machining technologies.
- Joining & fabrication.
- Simulation & verification.
- Robotics & automation.
- Control systems & instrumentation.
- Modularisation.

Find out more

For an informal discussion about whether a KTP is right for your business, contact Helen Arthur:

helen.arthur@namrc.co.uk

For more information about the programme:

www.ktp-uk.org

 [@ktnuk_ktp](https://twitter.com/ktnuk_ktp) [#ktp](https://twitter.com/ktp)



NUCLEAR AMRC

Nuclear AMRC
The University of Sheffield
Advanced Manufacturing Park
Brunel Way, Rotherham S60 5WG

namrc.co.uk
enquiries@namrc.co.uk
+44 (0)114 222 9900

 [@NuclearAMRC](https://twitter.com/NuclearAMRC)